

P2007349: Assessment and analysis at AHDB Strategic Cereal Farms

Strategic Cereal Farm Scotland

Strategic Cereal Farm Scotland is hosted by David Aglen at Balbirnie Home Farms, Fife. The Strategic Cereal Farm Scotland is the latest addition to the AHDB Strategic Farm programme and will run from 1 September 2020 to 31 August 2026. You can find our more information by visiting: ahdb.org.uk/farm-excellence/strategic_cereal_farm_scotland

The aim of the assessments at Strategic Cereal Farm Scotland is to determine a baseline of the status of the fields at Balbirnie Home Farm. This is needed before the subsequent research demonstrations commence.

The baselining work at the Strategic Cereal Farm Scotland has been divided into the following four work packages:

- Work package 11: soil biology and soil health
- Work package 12: biodiversity
- Work package 13: plant health

A further work package will investigate the impact of crop nutrition testing on crop health:

- Work package 14: nutrition trial

More detailed information on the assessments required are provided on the following pages. Applications should address each work package separately and you should provide detailed costs of each assessment.

Site map

The location of each of the fields is shown on the site maps provided in Figure 18, Figure 19 and Figure 20.

Work package descriptions

The work package descriptions below are provided as a guide. Where appropriate, please include alternatives to the proposed methodologies in your application based on your experience. Alternative methodologies should consider the intended aim of the Strategic Cereal Farm, budget and logistics of establishing and managing trials with farm scale machinery.

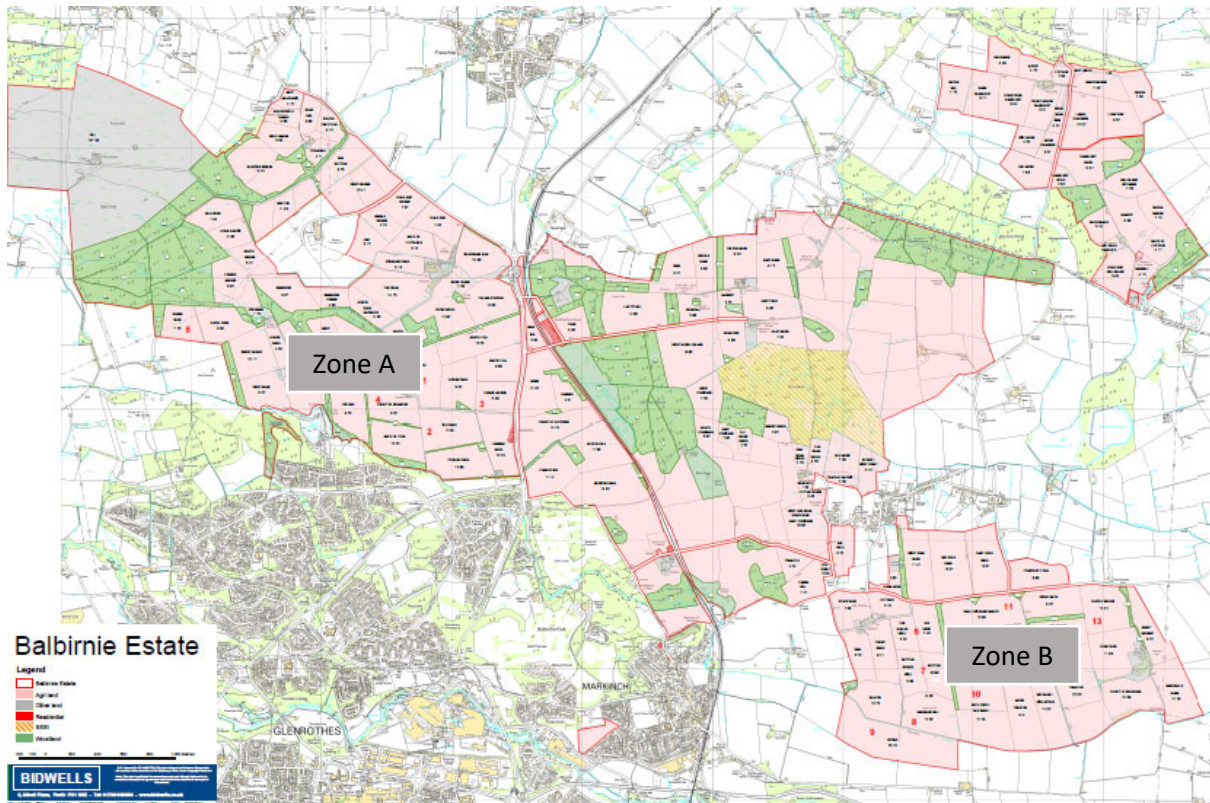


Figure 19 Field locations at Strategic Cereal Farm Scotland. Numbers indicate field numbers listed in the following Work Packages

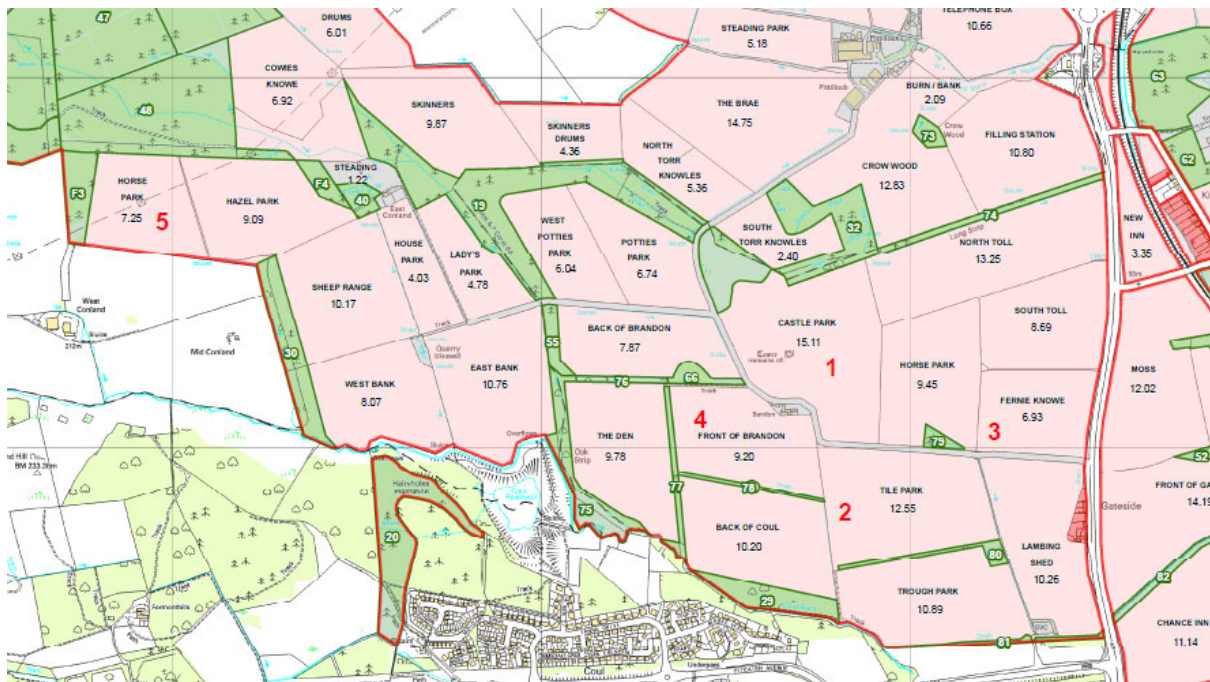


Figure 20 Zone A field locations at Strategic Cereal Farm Scotland. Numbers indicate field numbers listed in the following Work Packages

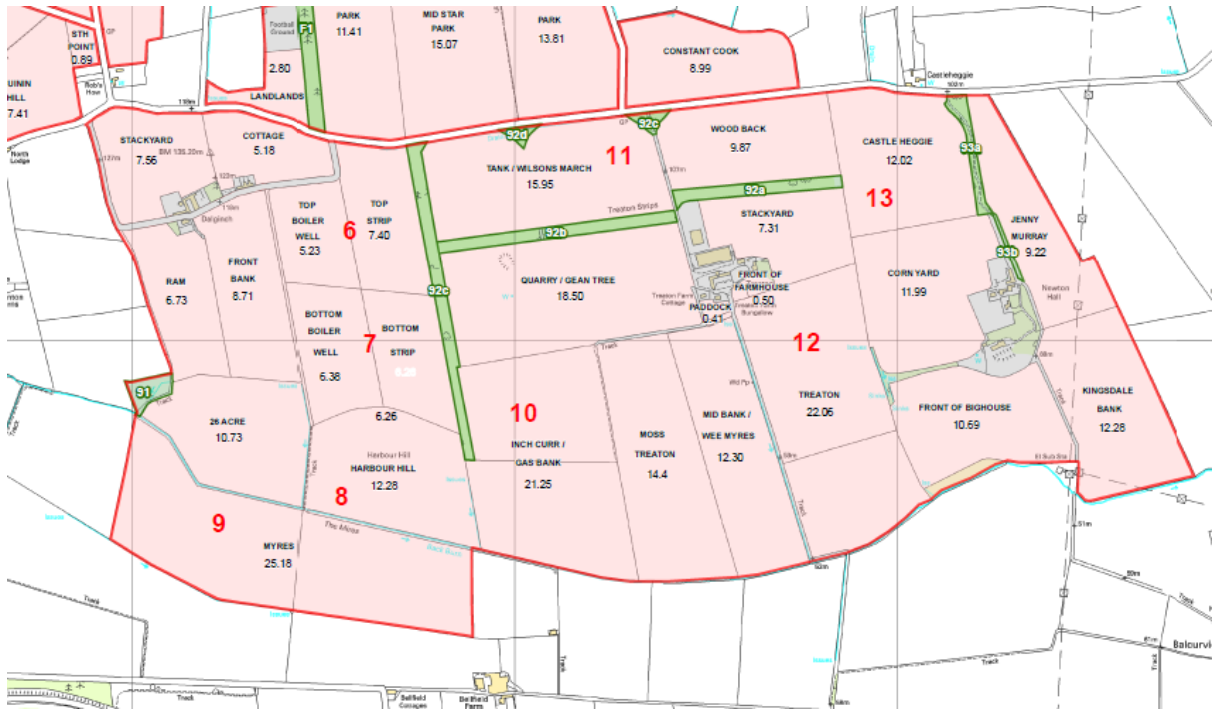


Figure 21 Zone B field locations at Strategic Cereal Farm Scotland. Numbers indicate field numbers listed in the following Work Packages