

Who are we and What do we do?

Tim Brigstocke – Chairman,

Cattle Health and Welfare
Group (CHAWG)

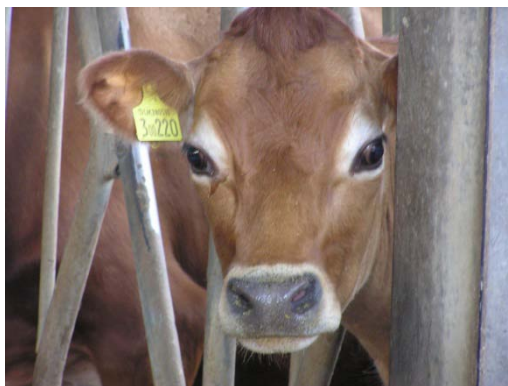
DairyCo

Supported by:



History

- GB Animal Health and Welfare Strategy
- England Implementation Group (2004)
- Sector Councils...
- Demise of EIG (2009)
- Industry commitment to these issues



Supported by

Group Make Up

- Levy Boards
- BCVA
- AHVLA
- CVO UK
- CVO Scotland
- CVO Wales
- NFU
- NBA
- NFUW
- **Defra**



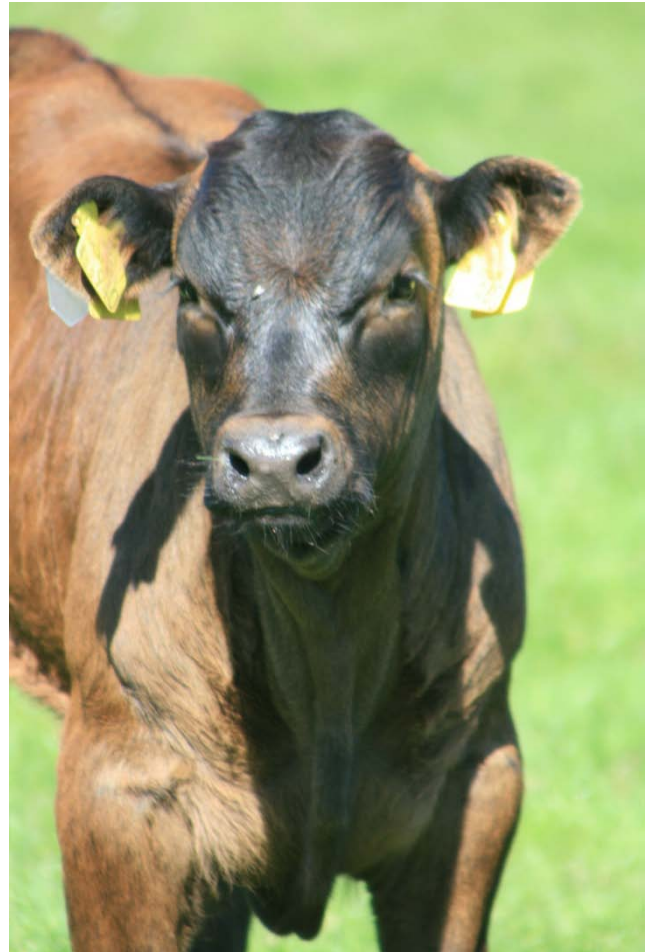
- ADF/ABM
- RSPCA
- HUK
- RABDF
- NOAH
- Research
- RDA
- NFUS
- AHDA
- **AHWBE**

Terms of Reference

1. To provide an **industry forum** that will encourage and coordinate a programme of economically focused improvements to cattle health and welfare across GB
2. To act as a forum to **prioritise the research, development and knowledge interaction needs of the GB cattle industry** in relation to cattle health and welfare to ensure knowledge gap identification, coordination and minimal duplication. Also, to assist in the dissemination of knowledge across the industry through the participating organisations within the group and others where appropriate.
3. To **liaise** closely with all stakeholders such as Levy Boards and educational institutions to promote consistent regional dissemination of national work and encourage the uptake of technological advances and best practice.
4. To provide **direction** and be a **resource** for the Chief Veterinary Officer and other relevant Government bodies on cattle health and welfare matters, including the early stages of policy development and other areas, where appropriate.

Priorities

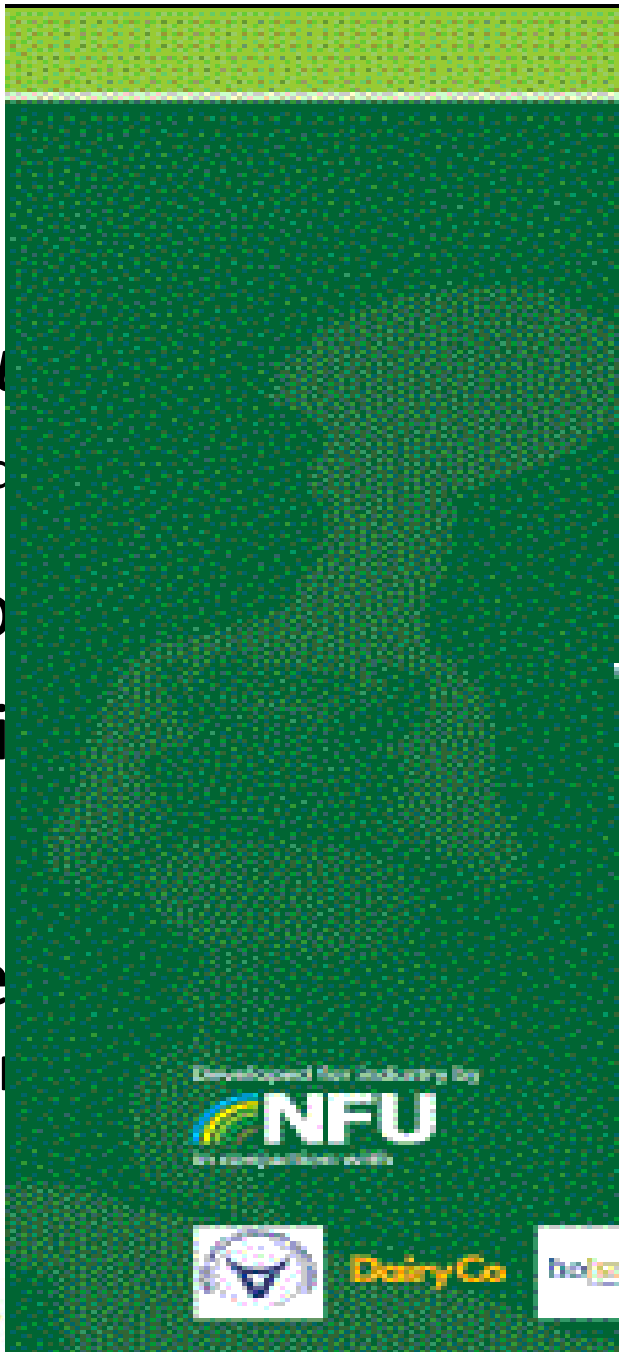
- Health Planning
- BVD
- Surveillance and reporting
- Dairy Cow Welfare Strategy



Current Activities

- Working closely with the AHVLA – *New and emerging diseases and industry liaison*
- *Quarterly meetings with AHWBE*
- *Liaison with devolved bodies and other similar groups*
- *Monitoring and annual reporting on the Dairy Cow Welfare Strategy*
- *Regular meetings with Levy Boards – Complimentary working*
- *Coordination and gap identification*
- *Development and launch of an annual ‘State of the Nation’ report on cattle health and welfare in GB*
- *Input to some consultations and projects of relevance from an industry perspective. – Often through others.*
- *Continually reviewing the Groups role – TOR altered in 2012.*
- *Engaging with the AHWBE*

- La
- 2nd
- No
- Evi
- Ne



CHAWG
Cattle Health and
Welfare Group

DairyCo



Dairy
UK



holstein UK
holstein & british friesland



NFU
Scotland

RABDF
Working for British Dairy Farmers




Dairy Cow Welfare Strategy

Year 2 Progress
Against Targets
November 2012

Key to progress chart:

 On target

 Work in progress

 Need to start activity

Developed for industry by
NFU
an independent body



DairyCo

holstein

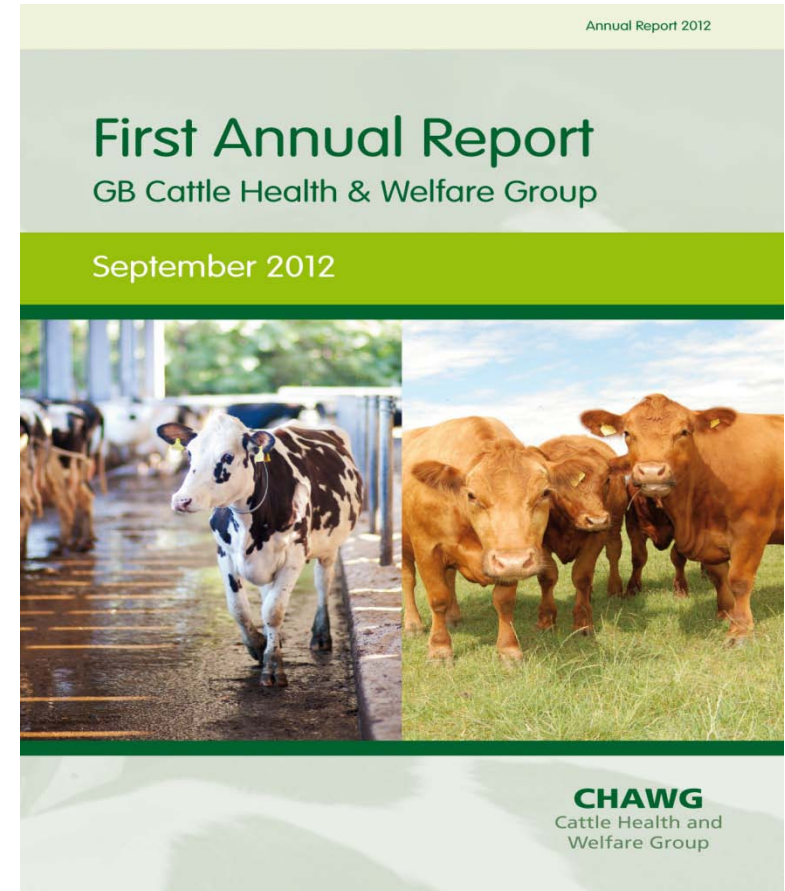
Annually the CHAWG reviews the targets to ensure they are relevant and reports on progress against the agreed targets. This summary provides a visual report on progress based on the first two years of delivery by the sector and is supported by an evidence table available on our website at www.chawg.org.uk



DairyCo

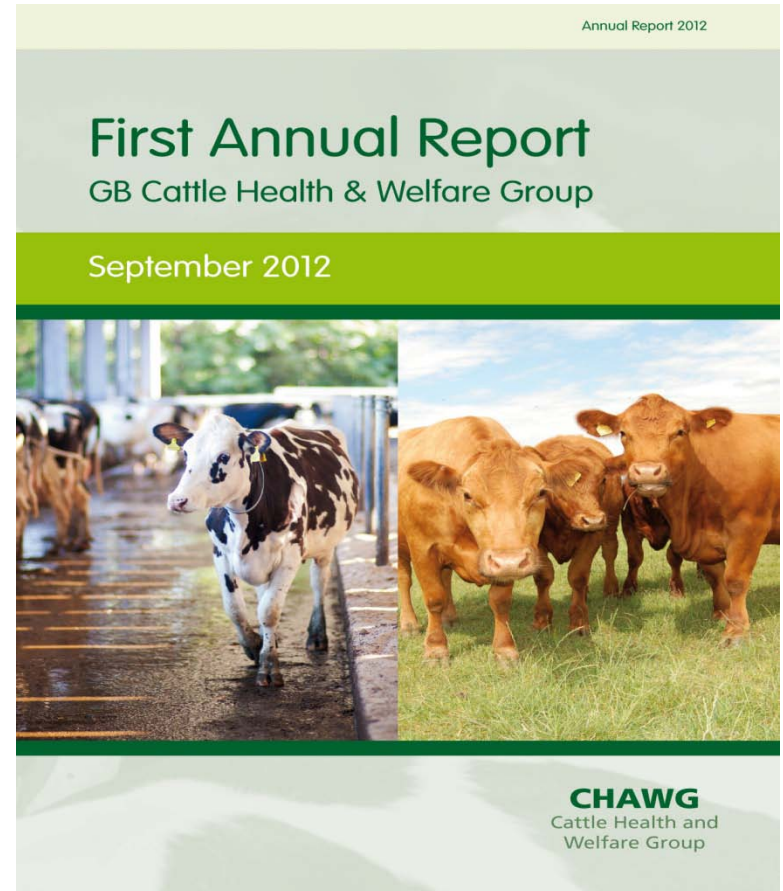
Annual GB Health and Welfare Status Report

- Launched at this event
 - CVO Wales
 - President of the BVA
 - Farming representatives
- Covering
 - Beef and Dairy
 - Health and welfare status
 - Major conclusions....
- Improve the quality in subsequent years



Conclusions!

- **Data**
 - Quality and mining
 - Demographics
- **Costs of disease**
- **Calf Rearing**
- **Importance of nutrition**
- **Fluke**
- **Industry initiatives**
 - Mastitis
 - Lameness
 - BVD
 - Johnes



Focus on BVD

- Group has BVD as a priority work area
 - Can do something about it!

 - Workshop
 - Working Group – Levy Board support
 - Proposal development - underway
- seeking a national co-ordination and recording mechanism – *Quantify progress***

Unique Group

- Cross section of Industry
- Used by others for guidance
- Represent the total 'farming industry'
- Compliment the work of others
- Vast resource that contributes to improving the health and welfare of Cattle in GB
- Connected to 'decision makers'

Collaboration is key to all our success!

Contact Us

Cattle (and Sheep)

Health and Welfare Groups

ruminanthandw@gmail.com

07824 – 664526

More?

www.chawg.org.uk

DairyCo

