

Why we Do the Things we
Do

TACKLING LAMENESS

The Gardner's



Why Lame Cows??



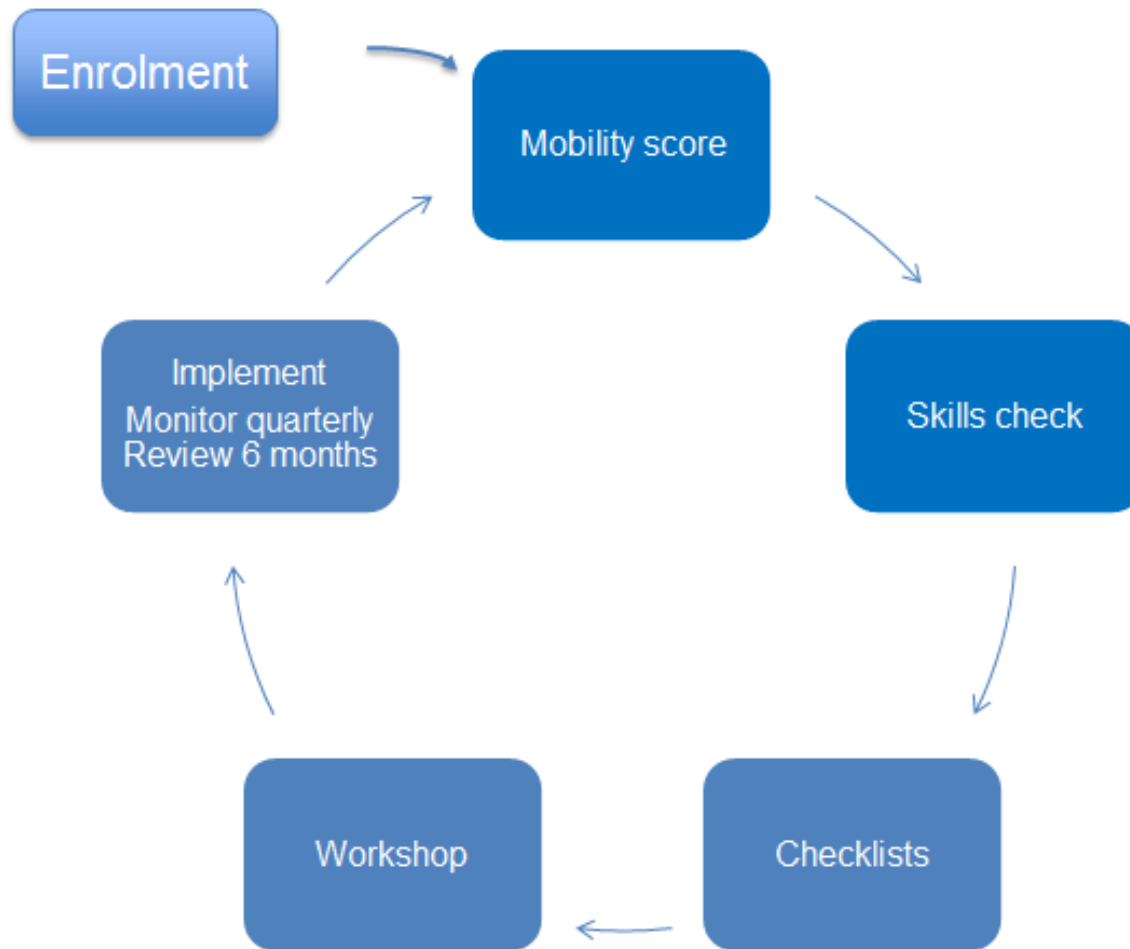


Question

- ⦿ Do you know the percentage of lame cows on your farm today?
 - Yes/No

- ⦿ **What is the Average Lameness Prevalence in the UK?**
 - a) 0 – 10%
 - b) 10 – 20%
 - c) 20 – 30%
 - d) 30 – 40%
 - e) 40 – 50%



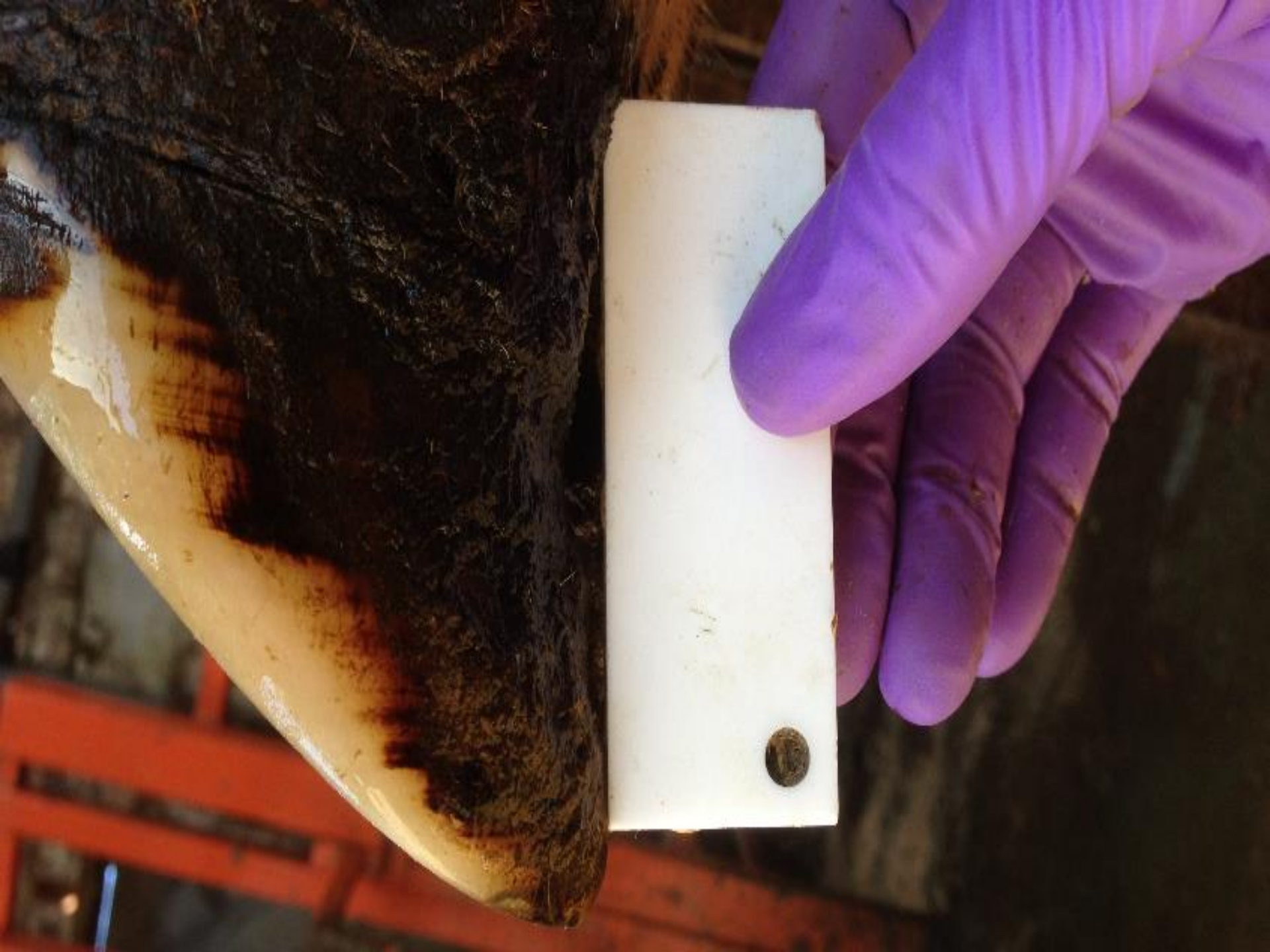


Simple? So what is different?

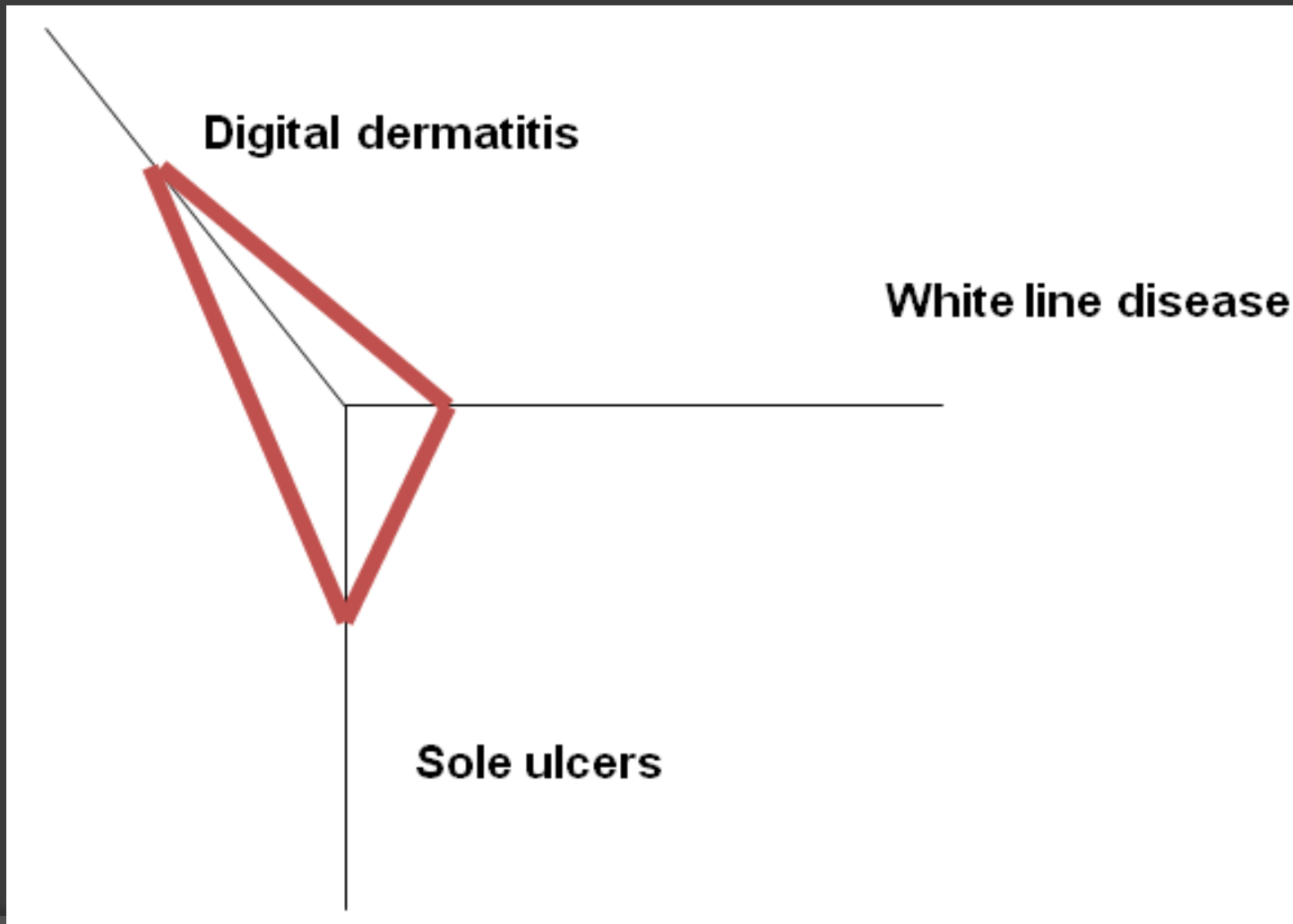
Mobility Mentor







Lameness Map



Low infection
pressure

Good horn
quality and hoof
shape

50%

Digital dermatitis

White line disease

50%

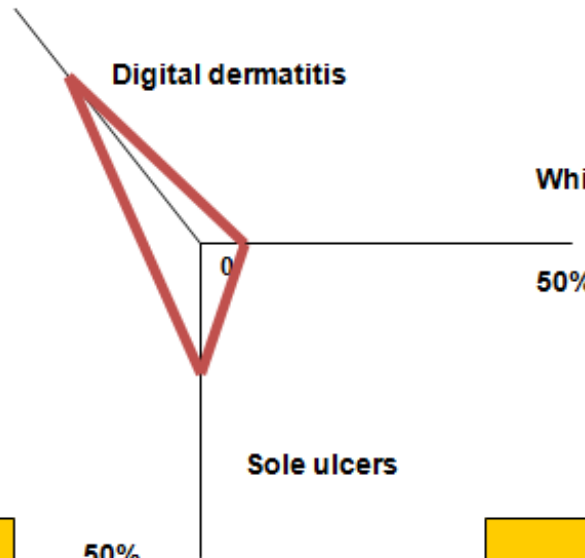
Sole ulcers

50%

Early lameness
detection and
prompt, effective
treatment

Low forces on feet:

- Good cow flow
- Good cow comfort



Action	Person Responsible	Timescale	Progress
Trim all first lactation heifers @ 40 - 70 days post calving	RG/BS		
Continue Routine DO Trims	RG/BS		
Recheck problem DO cows 40 -70 days post calving	RG/BS		
Move Brisket Board on new cubicles forward by 6 inches	RG		
Continue Biotin @ 20 mg cow/day	RG		
Implement New <u>Footbathing</u> protocol <ul style="list-style-type: none"> • Alternate Cu & Formalin monthly • 4d @ 2% • 1d @ 5% 	RG/HG		

McDougall, 2014

- NZ In-Calf Programme

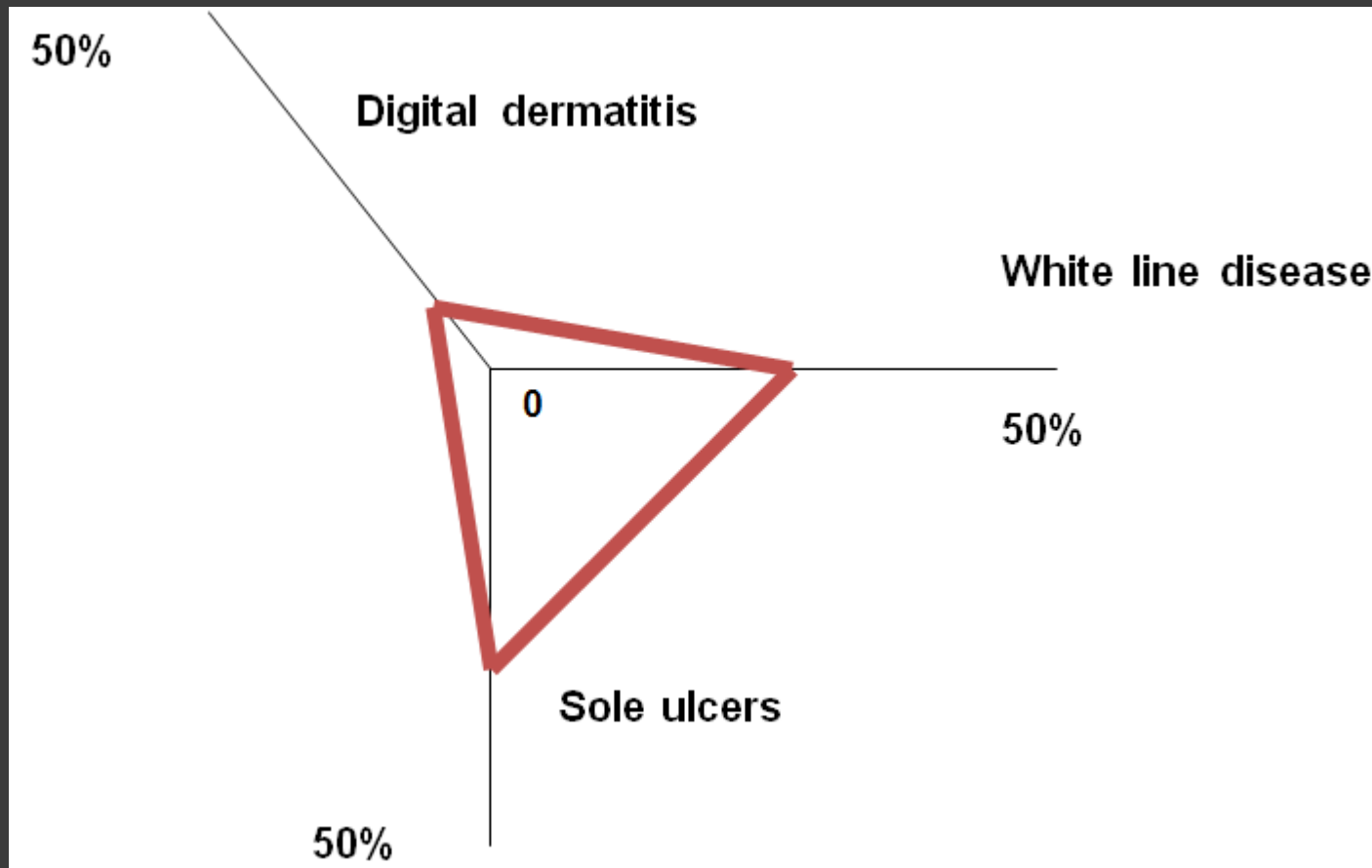
- 97% Recommendations not
SMART



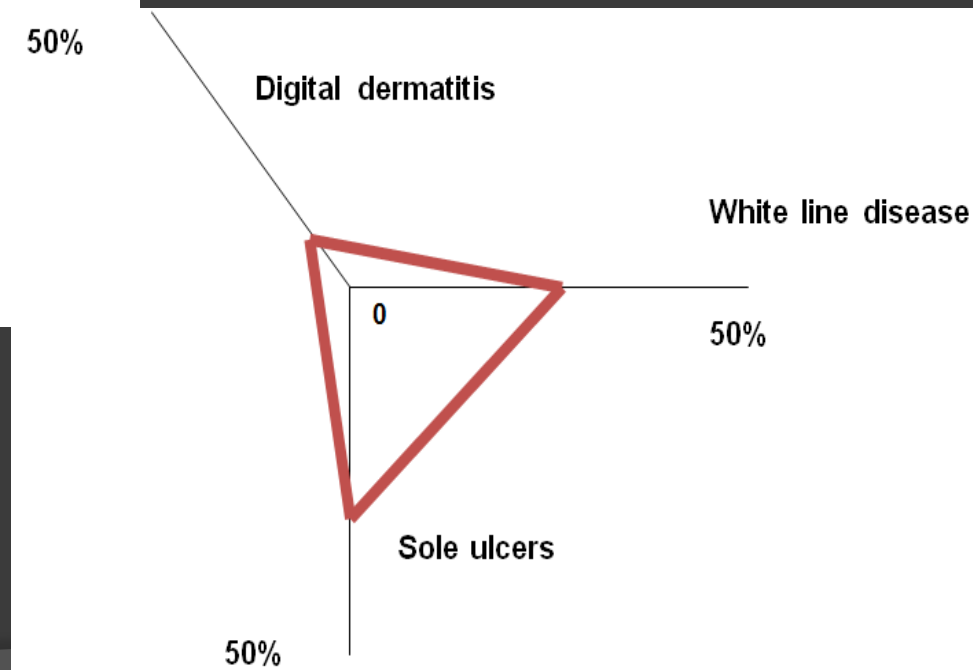
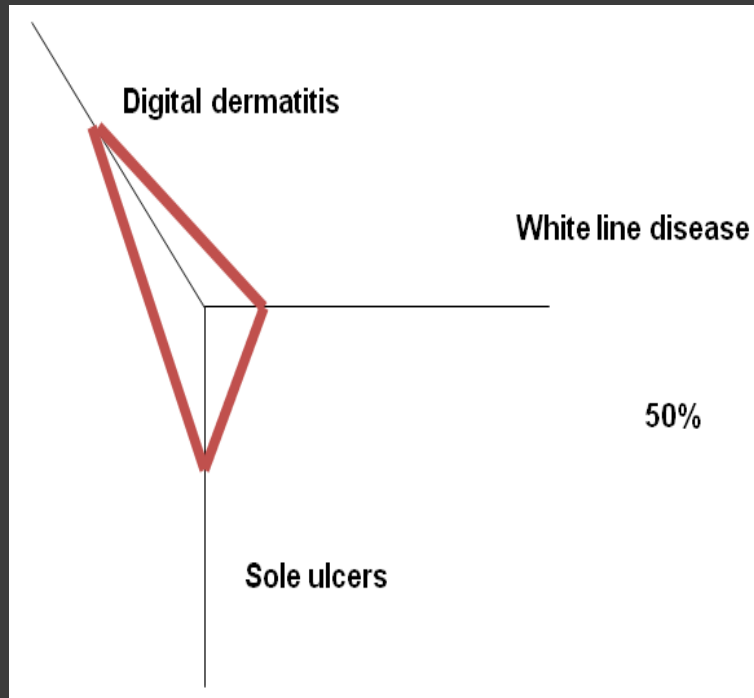




Current Situation



How Have Things Changed?



Mobility Scores

◎ May 2012

- 51% Score 2 & 3
- 19 Score 3 Cows

◎ June 2014

- 25% Score 2 & 3
- 1 Score 3 Cow

Next Step?

- Maintaining Enthusiasm....
- Use Mobility Scoring more Effectively

Feedback?

- How Useful was the Presentation?

- Very Useful

- Really Useful

- Extremely Useful

-

Question

⦿ **Starting Tomorrow, What Can You Do Differently?**

- a) Review Foot Trimming Protocols?
- b) Alter Footbathing Regime?
- c) Initiate Regular Mobility Scoring?
- d) Make Cubicle Modifications?
- e) Other?

Take Home Messages

- Digital Dermatitis control is achievable – the key is regular footbathing
- Set realistic, attainable targets e.g. I want fewer lame cows vs I will footbath once daily Mon – Fri
- Work with the whole farm team to tackle your farm's specific lameness challenges