

How to install the Cdl converter for Mastitis Pattern Analysis Tool

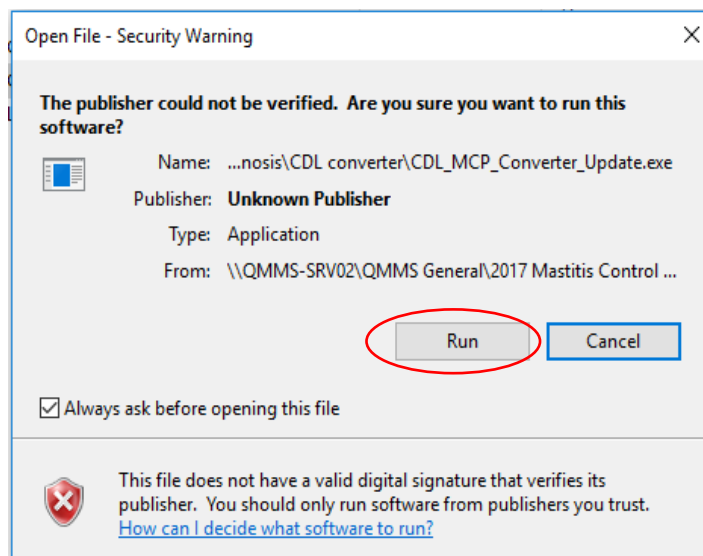
1. Download the file from the link http://www.sum-it.co.uk/CDL_MCP_Converter/CDL_MCP_Converter_Update.exe

The file below will appear in your downloads folder

File Name	Date	Type	Size
CDL_MCP_Converter_Update.exe	16/11/2018 09:18	Application	28,741 KB

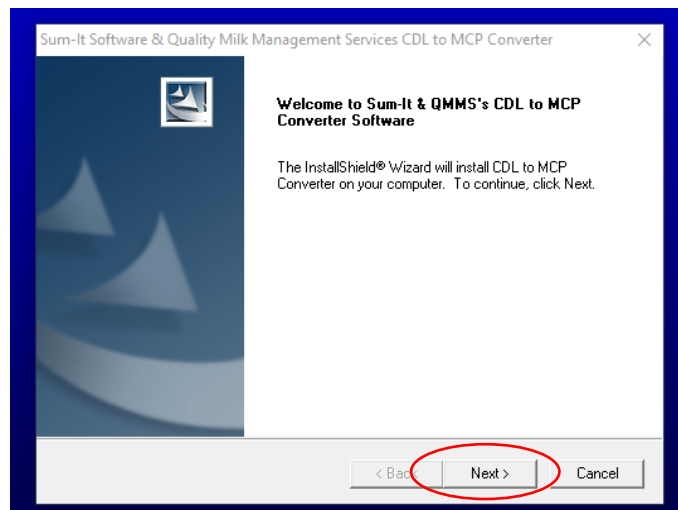
2. Double click on filename CDL_MCP_Converter_Update.exe

3. Click Run



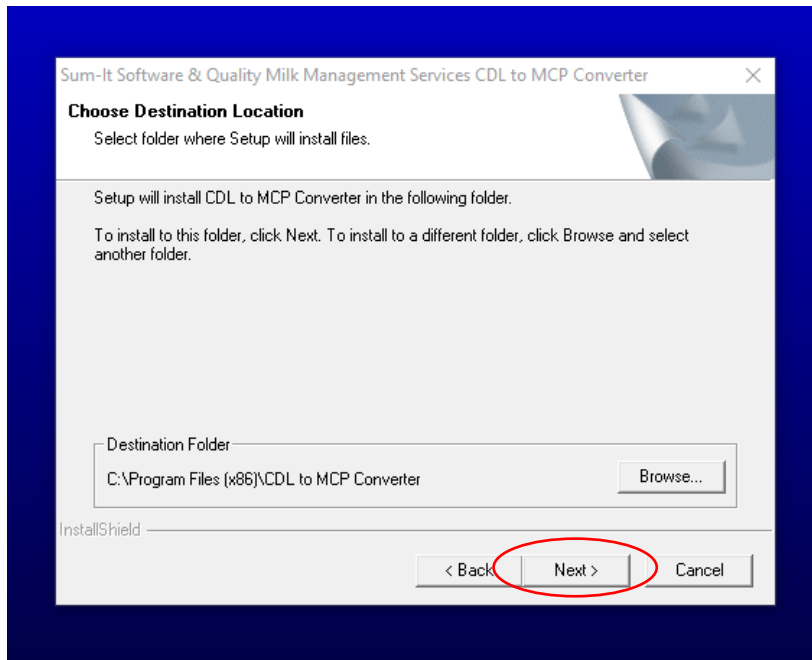
4. Click Yes to making changes to your computer

5. Click Next to begin installation process

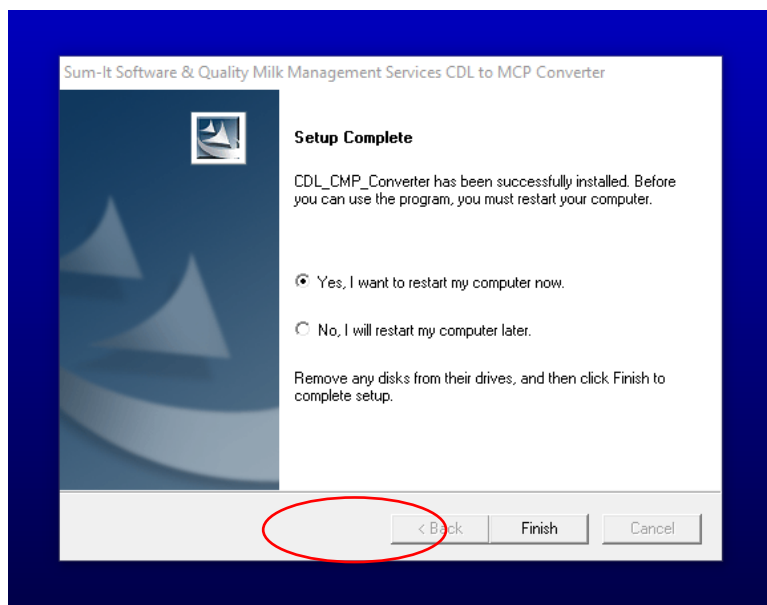


This converter has been developed and distributed by QMMS and SUM-IT free of charge for the benefit of the dairy industry

6. Click Next to start installation in the folder indicated



7. Click finish and restart the computer to complete the installation



8. The converter icon will appear on your desktop.

Click this to start the converter.



This converter has been developed and distributed by QMMS and SUM-IT free of charge for the benefit of the dairy industry