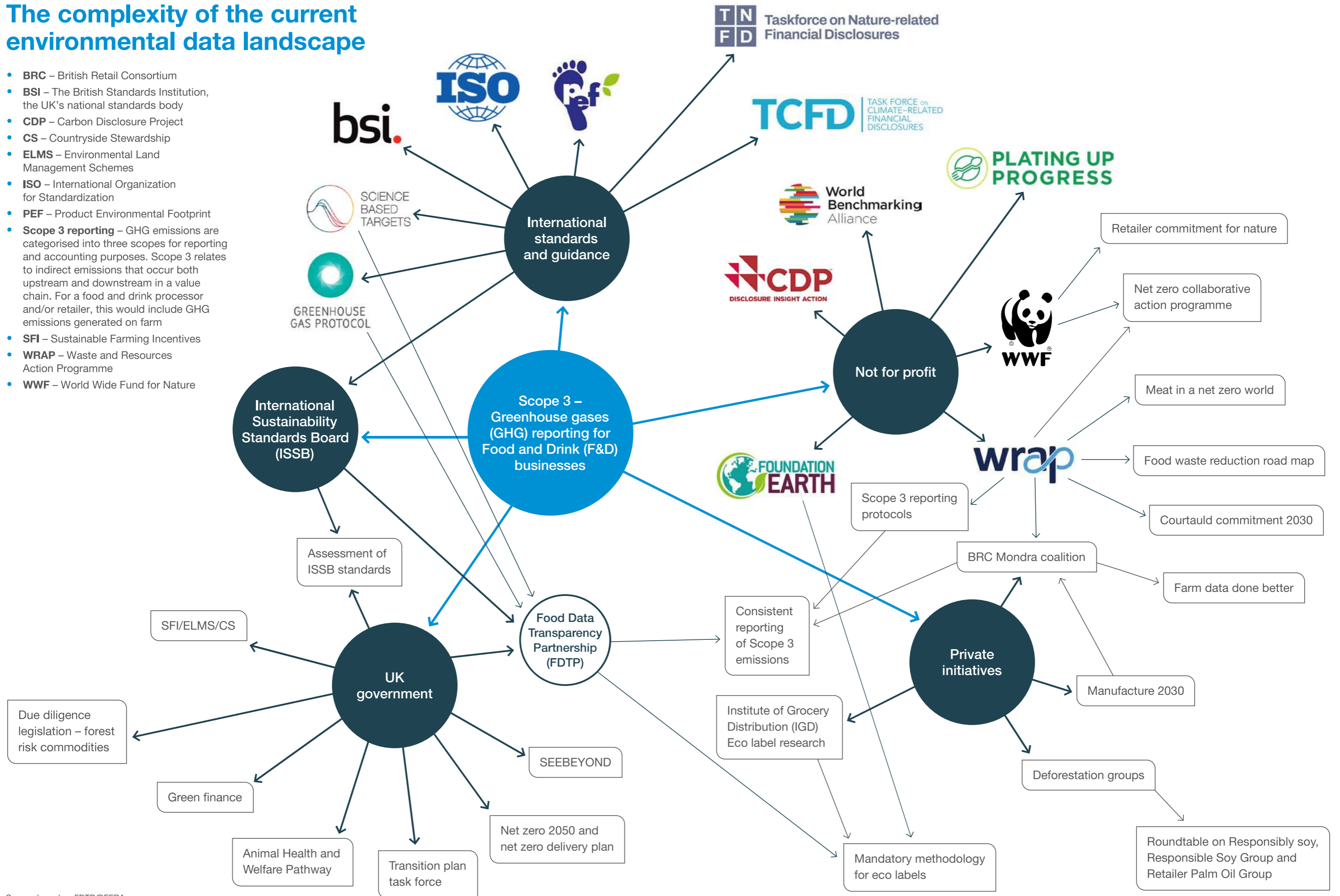


# The complexity of the current environmental data landscape

- **BRC** – British Retail Consortium
- **BSI** – The British Standards Institution, the UK’s national standards body
- **CDP** – Carbon Disclosure Project
- **CS** – Countryside Stewardship
- **ELMS** – Environmental Land Management Schemes
- **ISO** – International Organization for Standardization
- **PEF** – Product Environmental Footprint
- **Scope 3 reporting** – GHG emissions are categorised into three scopes for reporting and accounting purposes. Scope 3 relates to indirect emissions that occur both upstream and downstream in a value chain. For a food and drink processor and/or retailer, this would include GHG emissions generated on farm
- **SFI** – Sustainable Farming Incentives
- **WRAP** – Waste and Resources Action Programme
- **WWF** – World Wide Fund for Nature



Source: based on FDTP/DEFRA