



# APS actions to prevent ToBRFV infection

Phil Pearson

## Visitor Control

- Meet off site
- Designate a meeting area as dirty space
- Use the usual suits to prevent contact
- Provide captive shoes to prevent contamination through shoe covers failing
- Wash hands before entering glasshouse
- Stay on concrete paths with no plant contact





## Staff Clothing

- Complete change in and out
- Captive shoes
- Captive workwear
- Wash hands before entering glasshouse
- Challenges include:
  - Mobile Phones
  - Food
  - Smoking

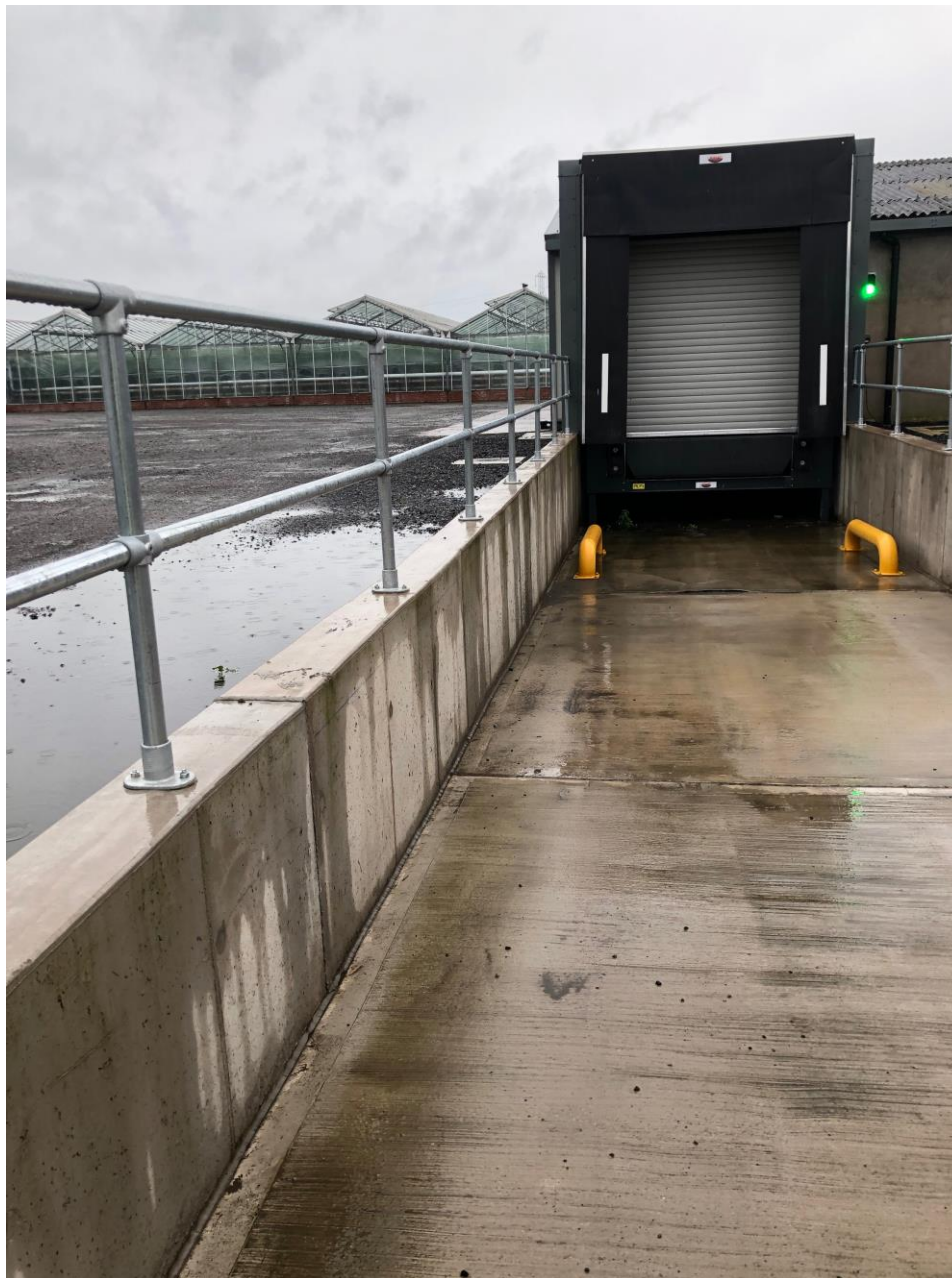




## Restricted Access

- Glasshouse personnel
- Packhouse personnel
- Visitors
- Customer Trays
- Fertiliser & other sundries including IPM and Bees













Safety