



RECOMMENDED LISTS



# Recommended Lists and the UKCPVS

Catherine Harries

UKCPVS stakeholder event, 1 March 2023



CEREALS & OILSEEDS

# Outline

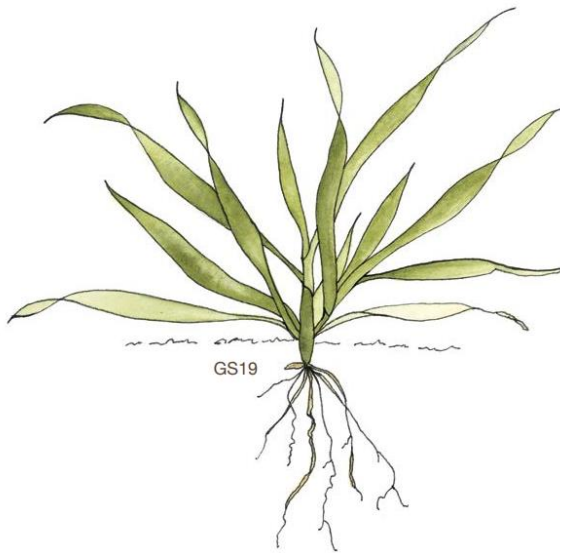
- Young plant susceptibility
- Watch list
- UKCPVS evaluation



# Yellow rust in wheat – young plant resistance

Young plant resistance

Adult plant resistance



# Yellow rust in wheat – young plant resistance

## Disease resistance

Mildew (1–9)	7	6	7	7	7	8	8	8
Yellow rust (1–9)	4	3	8	7	8	8	8	8
Yellow rust young plant	s	s	s	s	s	r	r	r
Brown rust (1–9)	6	8	9	8	7	5	9	6
Septoria tritici (1–9)	6.1	5.3	9	8	7.8	7.4	9	8.4
Septoria tritici (1–9) - one-year rating - <b>see note below</b>	5.8	5.1	9	8	7.3	7.2	9	8.2
Eyespot (1–9)	6@	7@	9	8	3	[6]	9	[6]@
Fusarium ear blight (1–9)	6	7	9	8	6	6	9	6
Orange wheat blossom midge	-	R	9	8	-	-	9	-



# UKCPVS data

*Young plant resistance/susceptibility to yellow rust for winter wheat varieties*

Variety name	RL group/status (RL 2022-23)	RL yellow rust disease rating (RL 2022-23)	RL adult plant resistance	UKCPVS young-plant-stage resistance (2020)	UKCPVS young-plant-stage resistance (2021)
KWS Zyatt	G1	4	S	S	S
Skyfall	G1	3	S	S	S
Crusoe	G1	9	R	S	S
RGT Illustrious	G1	8	R	R	S
KWS Extase	G2	8	R	S	S
KWS Palladium	G2 (new)	9	R	-	R
KWS Siskin	G2	9	R	R	R
Mayflower	G2 (new)	9	R	-	R
KWS Guium	G3 (new)	9	R	-	R
LG Prince	G3	8	R	R	R
KWS Brium	G3 (new)	9	R	-	S

# Recommended Lists data

Yellow rust %				
Trial ID	22TE826U	22BE538D	22MR513D	22MR514U
Town	Terringtn	Burdon	Attlebro	Terringtn
County	Norfk	Sundland	Norfk	Norfk
Rec date	16-May	14-May	17-May	23-May
Growth stage	GS 37-39	GS 39	GS 39	GS 52
Disease status	inoc	nat	nat	nat
Variety 1				S
Variety 2				S
Variety 3				S
Variety 4				S
Variety 5				S
Variety 6				R
Variety 7				S
Variety 8				S
Variety 9				R
Variety 10				R
Variety 11				S
Variety 12				R
Variety 13				S
Variety 14				R
Variety 15				R
Variety 16				S
Variety 17				R
Variety 18				R
Variety 19				R
Variety 20				R
Variety 21				S
Variety 22				S
Variety 23				S
Variety 24				R
Variety 25				R
Variety 26				R
Variety 27				R

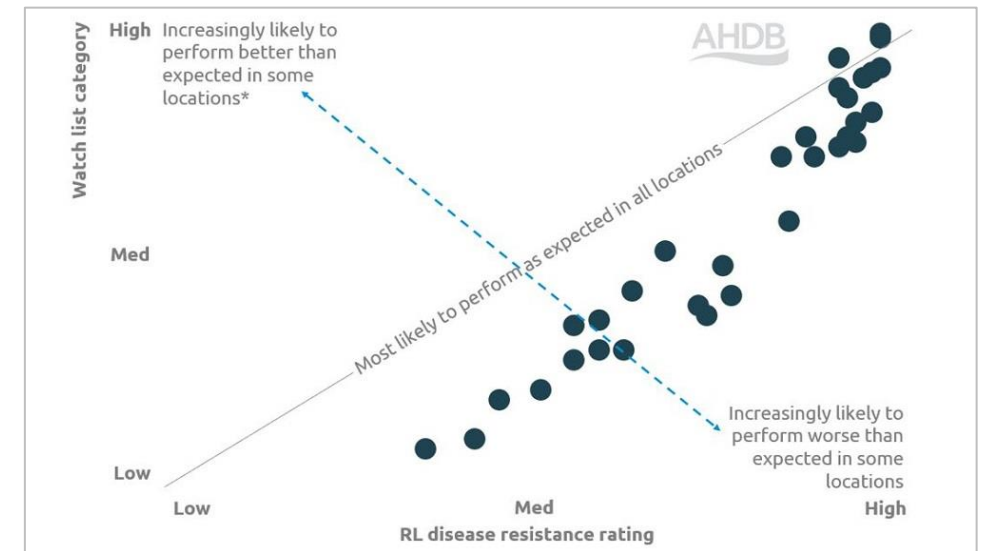


# Watch lists

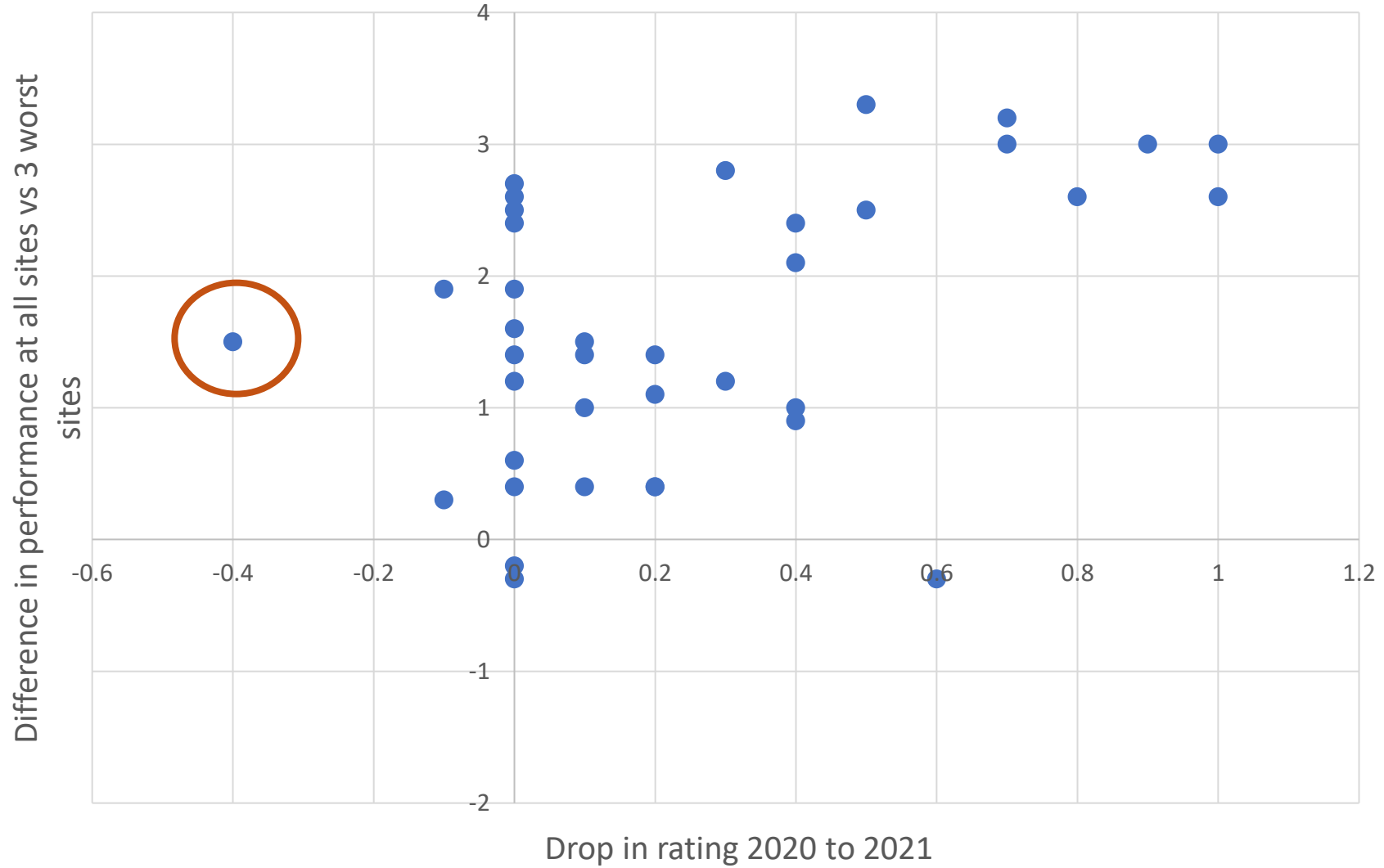


- Aim
  - Reveal varieties that have performed out of line with their Recommended Lists rating at some sites in that year
  - To highlight varieties that may be vulnerable to falls in resistance
  - To focus crop walking and management

Yellow rust watch list category	Winter wheat variety (RL 2022/23. Order based on resistance at the three worst trials for each variety. 1-year data set)	Disease rating (RL 2022/23. Adult-plant resistance based on a 3-year data set)
Highly resistant	Crusoe	9*
	Theodore	9
	KWS Extase	8*
	Mayflower	9
	LG Typhoon	9
	KWS Gulum	9
	Champion	8
	KWS Siskin	9
	KWS Palladium	9
	KWS Jackal	8*
	KWS Cranium	8
	Elation	8*

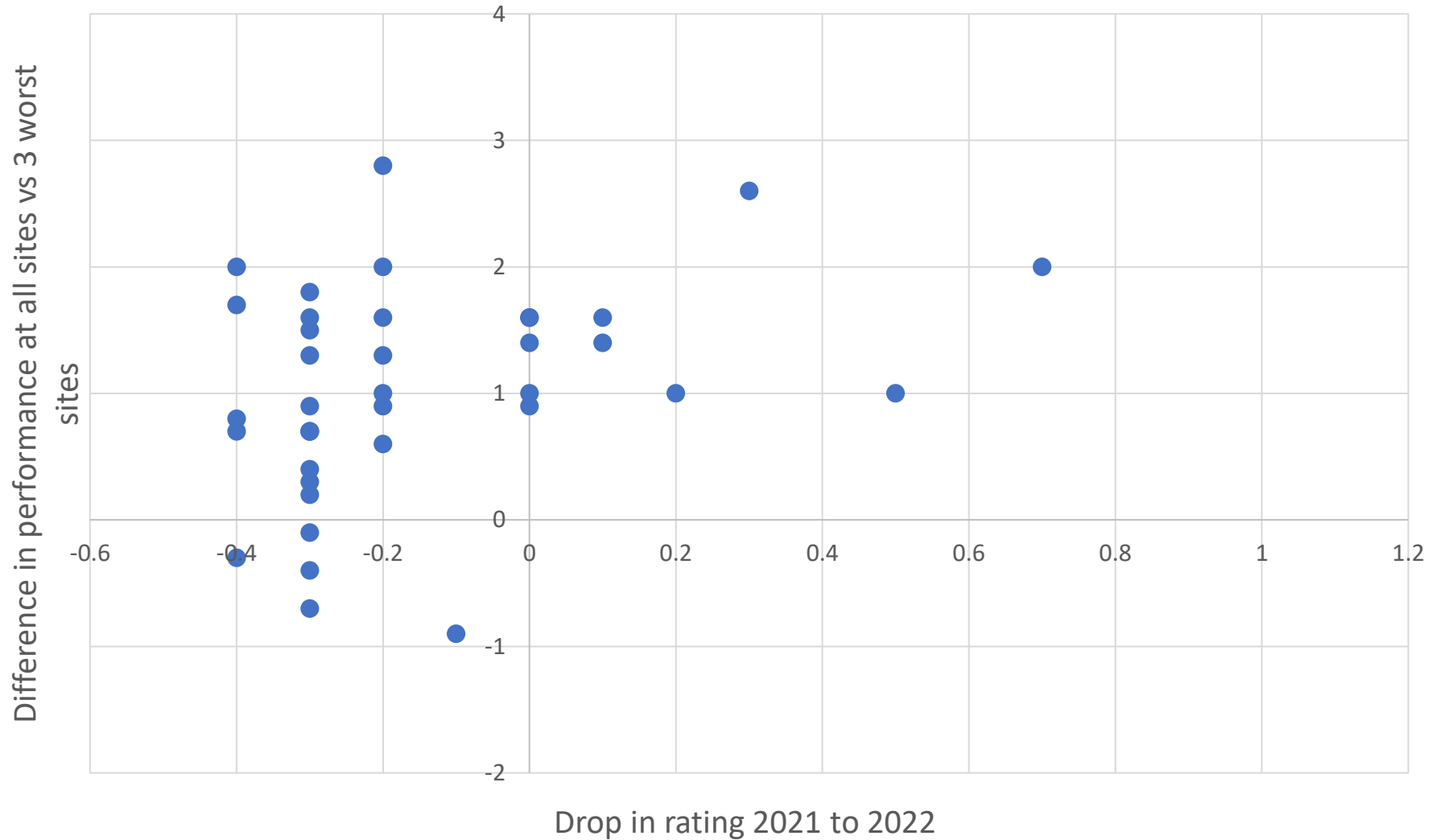


# Prediction success for 2021



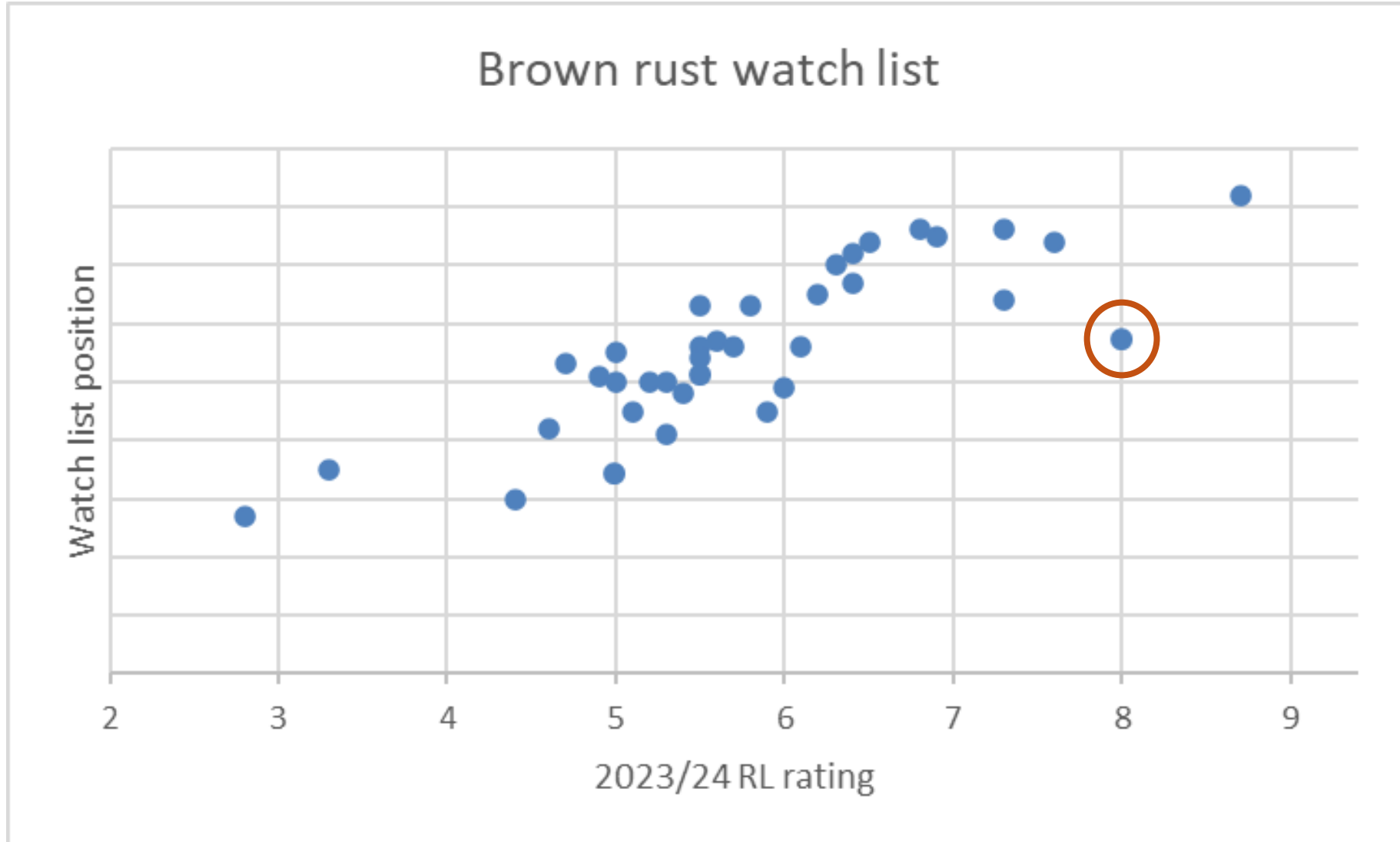


# Prediction success for 2022





# Harvest 2022 brown rust watch list



# UKCPVS evaluation

- We want to understand what YOU get out of this work
- Practically, how does it change your decision-making?
- Our independent consultant, Paul Teevan, is looking for volunteers

# Questions

*“Do we use it”*

*“Do we understand it”*

*“Does it inform decisions about making changes”*

*“Is it at reasonable cost”*

*“Are there tangible business benefits for levy payers”*

*“What are total programme benefits and costs?”*

# Thank you, any questions?

Catherine.harries@ahdb.org.uk

 @CatherineHar4

