



PURCHASING GUIDE

For beef and lamb offal
and variety meats

购买指南

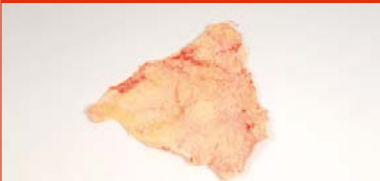
适用于牛羊内脏和
牛羊杂肉

AHDB

How to use this guide 如何使用本指南

Flank membrane
牛腩筋

MLC Code: 11285



Please quote this code and product name when you place your order or search online.

当您下单或在线搜索时,请注明此代码和产品名称。

Our website contains our entire range of step-by-step cutting specifications that your supplier can use.

我们的网站上提供了分步切割规范的全套信息,您的供应商可以使用这些信息。

ahdb.org.uk/mpg





Red Tractor Assurance Scheme

Founded in 2000, Red Tractor is the largest farm and food assurance scheme in the UK and has strict standards that cover all aspects of food production. Red Tractor standards apply to the whole supply chain, from feed ingredients to pig production, transport, slaughter, processing and packing. This includes pig welfare, food safety, traceability and environmental protection requirements. The scheme sets out to maintain, develop and promote assurance standards for the benefit of its members within the pig meat industry. Buying food with the Red Tractor logo is your assurance that it is safe to eat, produced responsibly and is traceable from farm to fork.

红色拖拉机保证计划

红色拖拉机计划创立于 2000 年,是英国规模最大的养猪场和食品保证计划,标准严格,涵盖了食品生产的方方面面。无论是饲料还是养殖、运输、屠宰、加工和包装过程,整个供应链都采用红色拖拉机计划标准。此外,它也充分考虑了牲畜福利、食品安全、追踪管理和环保要求。该计划致力于维护、制定和推广质量保障标准,以惠及猪肉行业内的从业人员。购买带红色拖拉机计划标志的食品,您完全可以放心食用,其生产过程非常可靠,您也可以跟踪从养殖到食用前的每个环节。



assurance.redtractor.org.uk

Quality beef and lamb from Britain

Beef, lamb and mutton, including red and green offal as well as variety meats from the carcase, come with the guarantee of high safety due to a farm assurance programme. The products are subject to strict veterinary controls at abattoirs, cutting plants and before shipments. Our exporters have built a strong reputation for quality in the selection, processing, packaging and freezing for more than 130 products from sheep and cattle. In terms of logistics, exporters have built a significant trade to the Far East based on delivering what the local discerning customers want, just in time. Products are available frozen in standard 20 kg lined card boxes and, for specific items, 10 kg card boxes in full or mixed containers. However, our exporters also pride themselves on their flexibility to adjust to customer requirements in terms of product presentation and packaging.

来自英国的优质牛肉和羊肉

在农场保证计划下,可保证牛肉、羊肉和羔羊肉,包括红内脏和绿内脏以及来自畜体的杂肉高度安全。这些产品在屠宰场、切割厂和装运前均受到严格的兽医监控。我们的出口商在 130 多种牛羊产品的挑选、加工、包装和冷冻方面建立了良好的口碑。在物流方面,出口商已与远东建立了重要的贸易关系,为当地高标准的客户及时交付所需产品。产品以冷冻形式供应,其采用的包装为标准的 20 公斤内衬纸盒,部分产品则为 10 公斤纸盒,并采用整柜装运或混合货柜装运方式。我们的出口商也非常乐意在产品展示和包装方面根据客户的需要作出灵活调整。





Beef offal and variety meats

牛肉脏和牛杂肉



Flank membrane
牛膈筋

MLC Code: 11285



Beef paddywack middle
中段板筋

MLC Code: 11302



Achilles tendon
短蹄筋

MLC Code: 11304



Beef paddywack whole
整根板筋

MLC Code: 11301



Beef paddywack tips
牛板筋尖

MLC Code: 11303



Beef spoon tendons
勺筋

MLC Code: 11305



Beef long hindquarter tendons
后蹄筋

MLC Code: 11306



Beef scapular cartilage
肩胛软骨

MLC Code: 11410



Beef patella meat on
带肉膝盖骨

MLC Code: 11502



Silverskin
会扒筋

MLC Code: 11307



Femur bone
后筒骨

MLC Code: 11501



Humerus bone
前筒骨

MLC Code: 11511



Beef radius
牛桡骨

MLC Code: 11512



Beef aitch bone cartilage
牛臀部软骨

MLC Code: 11551



Beef aorta flat
心管 (剖开)

MLC Code: 91101



Beef tibia bone
牛肘骨

MLC Code: 11520



Beef aorta tube
心管

MLC Code: 91100



Beef lights
肺

MLC Code: 91210



Beef spleen
牛膀

MLC Code: 91211



Beef trachea flat
气管 (剖开)

MLC Code: 91221



Beef lip meat – papillae
唇肉

MLC Code: 91531



Beef trachea tube
气管

MLC Code: 91220



Beef snouts, cooked
熟牛鼻

MLC Code: 91517



Nasal septum
鼻中隔

MLC Code: 91541



Beef cheek trimmed
牛面碎肉

MLC Code: **91550**



Short tendon
短筋

MLC Code: **91611**



Beef pizzle sheath
鞭皮

MLC Code: **91702**



Beef heel
牛蹄

MLC Code: **91600**



Beef pizzle
牛鞭

MLC Code: **91701**



Beef testicle
睪丸

MLC Code: **91703**



Beef thin skirt membrane
横膈膜

MLC Code: **91812**



Beef liver
牛肝

MLC Code: **91300**



Beef bible tripe
百叶

MLC Code: **91903**



Beef tripe
大肚

MLC Code: **91900**



Beef honeycomb tripe
金钱肚

MLC Code: **91902**



Reed or abomasum
红肚

MLC Code: **91904**



Weasand flat
食管片

MLC Code: 91931



Weasand or oesophagus
食管

MLC Code: 91930



Lamb offal and variety meats

羊内脏和羊杂肉



Lamb tail
羊尾

MLC Code: **32120**



Lamb back bone
脊骨

MLC Code: **33521**



Lamb paddywack
板筋

MLC Code: **37301**



Lamb spare Ribs
肋条骨

MLC Code: **32266**



Lamb breast bone
腹肋骨

MLC Code: **35150**



Lamb back fat
背部脂肪

MLC Code: **37321**



Lamb body fat
体表脂肪

MLC Code: **37322**



Neck of lamb (split)
劈开羔羊脖

MLC Code: **38171**



Neck of mutton
老羊脖

MLC Code: **48170**



Neck of lamb (barrel)
羔羊脖

MLC Code: **38170**



Lamb scapular cartilage
肩胛软骨

MLC Code: **38410**



Lamb heart
心脏

MLC Code: **92200**



Lamb lights
肺脏

MLC Code: **92210**



Lamb kidneys
羊腰

MLC Code: **92400**



Lamb head (with/without tongue)
羊头 (连/不连羊舌)

MLC Code: **92502**



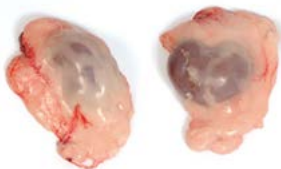
Lambs liver
羊肝

MLC Code: **92300**



Lamb kidneys – fat on
羊腰带油

MLC Code: **92402**



Lambs tongue
羔羊舌

MLC Code: **92502**



Lamb brain
羔羊脑

MLC Code: **92560**



Lamb feet
羔羊蹄

MLC Code: **92600**



Lamb pizzle
羊鞭

MLC Code: **92701**



Lamb eye
羔羊眼

MLC Code: **92570**



Lamb sweetbreads
胸腺

MLC Code: **92700**



Lamb thick skirt
后横膈肌

MLC Code: **92800**



Lamb tripe
羔羊肚

MLC Code: 92900



Lamb internal fat
羊内层脂肪

MLC Code: 92960



Produced for you by:

AHDB, Middlemarch Business Park,
Siskin Parkway East, Coventry CV3 4PE,
United Kingdom

T +44 (0)24 7669 2051
E exports@ahdb.org.uk
W ahdb.org.uk

If you no longer wish to receive this
information, please email us on
comms@ahdb.org.uk



AHDB is a statutory levy board funded by farmers and others in the supply chain. Our purpose is to be a critical enabler, to positively influence outcomes, allowing farmers and others in the supply chain to be competitive, successful and share good practice. We equip levy payers with easy-to-use products, tools and services to help them make informed decisions and improve business performance. Established in 2008 and classified as a Non-Departmental Public Body, AHDB supports the following industries: meat and livestock (Beef, Lamb and Pork) in England; Dairy in Great Britain; and Cereals and Oilseeds in the UK. For further information, visit ahdb.org.uk

All other trademarks, logos and brand names contained in this publication are the trademarks of their respective holders. No rights are granted without the prior written permission of the relevant owners.

While the Agriculture and Horticulture Development Board seeks to ensure that the information contained within this document is accurate at the time of printing, no warranty is given in respect thereof and, to the maximum extent permitted by law, the Agriculture and Horticulture Development Board accepts no liability for loss, damage or injury howsoever caused (including that caused by negligence) or suffered directly or indirectly in relation to information and opinions contained in or omitted from this document.

© Agriculture and Horticulture Development Board 2024. All rights reserved.

Photography credits: Cover © Dreamstime (133452343); Pages 2-3 © Dreamstime (101078204); Page 5 © Dreamstime (239643212); Page 13 © Dreamstime (157856050); Page 14 © Amy Bateman; Page 19 © Dreamstime (185657473); all other photos © AHDB

