

# FUN ON THE FARM

Did you know there are over 23 million sheep and 82 different breeds in the UK? That's a lot of sheep. Which explains why all our farmers are so busy taking care of them. Maybe you can help? How many sheep can you find on this page?

M	K	E	I	W	I	H	E
Z	A	B	V	D	O	F	F
C	T	M	R	O	K	O	I
T	Q	A	X	E	L	G	L
T	I	L	E	J	O	R	D
N	I	W	P	J	H	A	L
F	A	R	M	E	R	S	I
F	I	E	L	D	T	S	W

Love Lamb Week  
Farmer Wool Grass  
Rain Wildlife Field



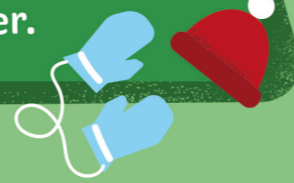
A) Which two months of the year are lambing season, the time most lambs are born?.....



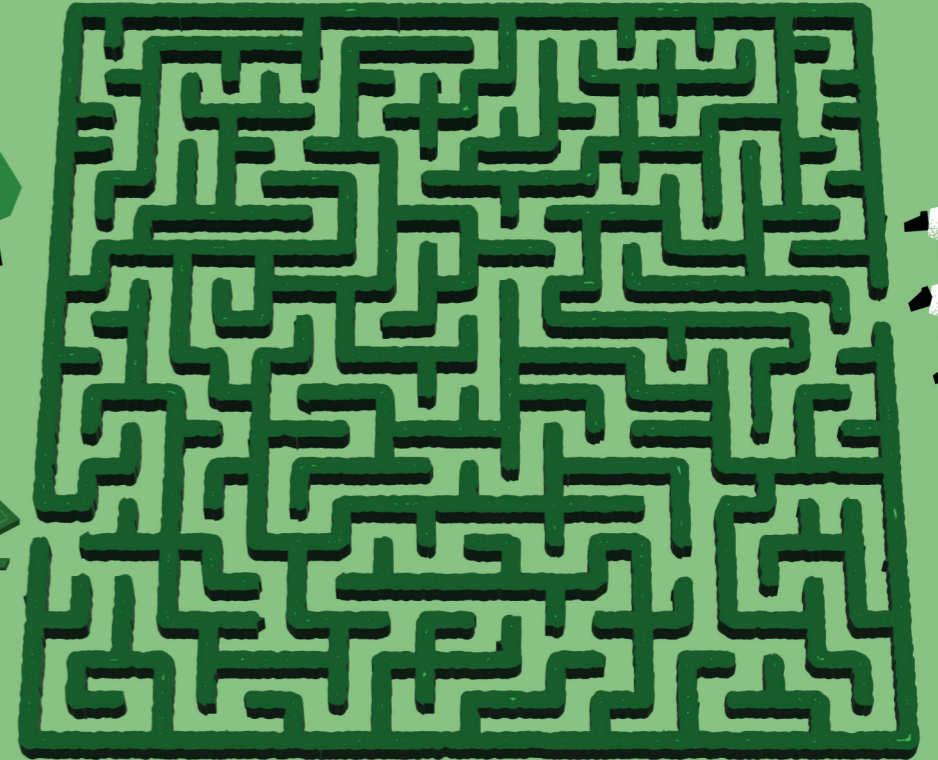
Many UK sheep are free to roam in their fields but looked after by farmers, who make sure our countryside is just right for them to thrive.



During the summer, when it gets hot, sheep are sheared to remove their wool. This isn't wasted. It can be used for different things like home insulation, or to make the clothes that keep us cosy in winter.



## HELP THE LAMB FIND ITS FLOCK



B) True or false, sheep have 300-degree vision and can see behind them without turning around?.....



D) What is an adult male sheep called?.....

Rain is important because it helps the grass to grow, which is a constant source of sustainable food.



.....

E) What is an adult female sheep called?.....



C) How many different breeds of sheep are found in the UK? .....